

## ALCOHOL WIPES

These highly efficacious general purpose wipes contain 70% Isopropylalcohol (IPA). With an ultra-low linting material which delivers a controlled dosage to ensure optimum disinfection performance with every wipe.

3 products in this range.



### AT A GLANCE:

- ✓ PHMB Free
- ✓ Fast drying
- ✓ No visible residue

### IDEAL FOR:

- ✓ Disinfecting hard surfaces on non invasive medical devices and equipment
- ✓ Use where there is a high risk of infection



SKIN HYGIENE



HIGH LEVEL DISINFECTION



SURFACE CLEANING



SURFACE DISINFECTANT

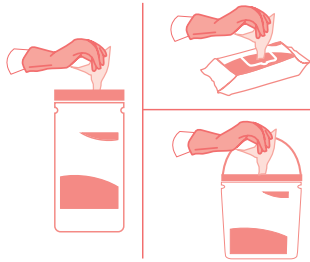
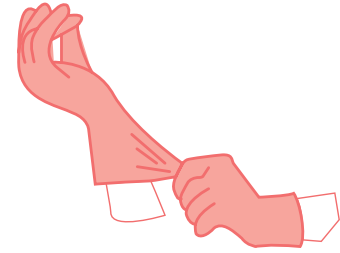


Scan for online factsheet  
and safety data sheet

## HOW TO USE:

### STEP 1 | RISK ASSESSMENT

Please follow your agreed risk assessment policy guidelines regarding the use of PPE.



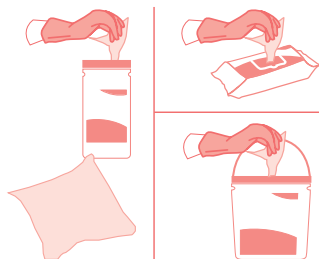
### STEP 2 | WIPE SELECTION

Choose the dispenser type and dispense the wipe.

### STEP 3 | S-SHAPE TECHNIQUE

Wipe the surface in an S Shape moving from clean to dirty. Use the wipe flat not scrunched.

Do not go over the same area twice with the same wipe.

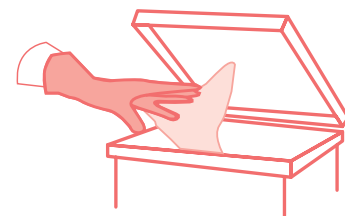


### STEP 4 | FRESH WIPE

Use a fresh wipe if your wipe becomes soiled or dry.

### STEP 5 | DISCARD

Discard used wipes in the appropriate waste bin following your local agreed guidelines.



Do not flush 



### STEP 6 | LET DRY

Allow the surface to dry before use.

## TECHNICAL DETAILS



Medipal's proprietary Tritex<sup>®</sup> material is made by bonding layers of spunbond and meltblown polypropylene fibres together in a high heat process. The addition of a hydrophilic coating means optimum and consistent liquid discharge.

### CHEMICAL FORMULATION

Medipal Alcohol Disinfectant Wipes use isopropyl alcohol. Isopropanol is commonly used as a disinfectant and as an antiseptic. It has limited residual activity due to evaporation, which results in brief contact times unless the surface is submerged, and have a limited activity in the presence of organic material.

Alcohols are most effective when combined with purified water to facilitate diffusion through the cell membrane. A mixture of 70% isopropanol diluted in water is effective against a wide spectrum of bacteria.

### MATERIALS

Tritex<sup>®</sup> material is made by bonding layers of spunbond and meltblown polypropylene fibres together in a high heat process before a hydrophilic coating is applied. This material is 100% synthetic.



#### High Strength

The material offers high strength in both directions – across and along the wipe.



#### Excellent Solution Retention

Ensuring even wetness throughout the wipe.



#### Very Low Linting

Low risk of leaving contaminating fibres on surfaces.



#### Efficient Solution Release

Active wipe ingredients are transferred to the surface rather than being trapped in the wipe material fibres.

## Efficacy details

Effective Against	Test	Kill Time
<b>BACTERICIDAL</b>		
Acinetobacter Baumannii	EN 13697	30 seconds
	EN 14561	30 minutes
E. Coli (EsbI)	EN 13697	30 seconds
	EN 1276	1 minute
Enterococcus Faecalis (Vre)	EN 13697	30 seconds
	EN 14561	30 seconds
Enterococcus Hirae	EN 16615	1 minute
	EN 13727	1 minute
	EN 13697	30 seconds
	EN 1276	1 minute
	EN 14561	30 minutes
Pseudomonas Aeruginosa	EN 16615	1 minute
	EN 13727	1 minute
	EN 13697	30 seconds
	EN 1276	1 minute
	EN 14561	30 minutes
S. Aureus (Mrsa)	EN 13697	30 seconds
	EN 14561	30 minutes
Staphylococcus Aureus	EN 16615	1 minute
	EN 13727	1 minute
	EN 13697	30 seconds
	EN 1276	1 minute
	EN 14561	30 minutes
<b>MYCOBACTERICIDAL</b>		
Mycobacterium Avium	EN 14348	1 minute
	EN 14563	1 minute
Mycobacterium Terrae	EN 14348	1 minute
	EN 14563	1 minute

## Efficacy details

Effective Against	Test	Kill Time
<b>VIRUCIDAL</b>		
Murine Norovirus	EN 14476	1 minute
	EN 14476	5 minutes
Vaccinia Ankara Virus	EN 14476	5 minutes
* This test covers all enveloped viruses according to EN 14476 2013 + A1 2015 Annex A		
<b>YEASTICIDAL AND FUNGICIDAL</b>		
Candida Albicans	EN 16615	1 minute
	EN 13624	1 minute
	EN 1650	1 minute

## PRODUCTS WITHIN THIS RANGE

### 150 WIPE CANISTER



**Quantity:**  
150 per pack  
10 packs per case

**Product Code:**  
W505110MPCE

### 200 WIPE CANISTER



**Quantity:**  
200 per pack  
10 packs per case

**Product Code:**  
W600110MPCE

### 240 WIPE CANISTER



**Quantity:**  
240 per pack  
10 packs per case

**Product Code:**  
W500110MPCE